

CEMETERY INFRASTRUCTURE WORKS

HALTON CEMETERIES -IMAGE BOOKLET



APPENDIX No 1

CEMETERY INFRASTRUCTURE WORKS

WIDNES CREMATORIUM AND CEMETERY

INFRASTRUCTURE ISSUES



Excessive carriageway width with large expanses of bitmac surfacing has proved both expensive to maintain but also an issue in ever increasing heavy rain and cloudbursts with high amounts of surface water run off.



Derelict hard surfacing does not allow filtration and is unsightly so will be removed and replaced with green infrastructure.



No formal parking and delineation of bays results in ad hoc parking causing potential safety issues for cemetery users.



Wide pedestrian footpaths limit filtration during flood events and lead to conflict with pedestrians, vehicles and parked cars.



Occurance of potholes is common across wide expanses of bitmac and both proving expensive to repair and deal with resulting claims from trips and damage to vehicles.



Damage with enroachment by vehicular traffic of grave plots.



Flooding during heavy rain and cloudbursts is an ongoing issues in the cemetery with limited capacity to deal with the amount off surface water runoff from large expanses of hard surfaces.

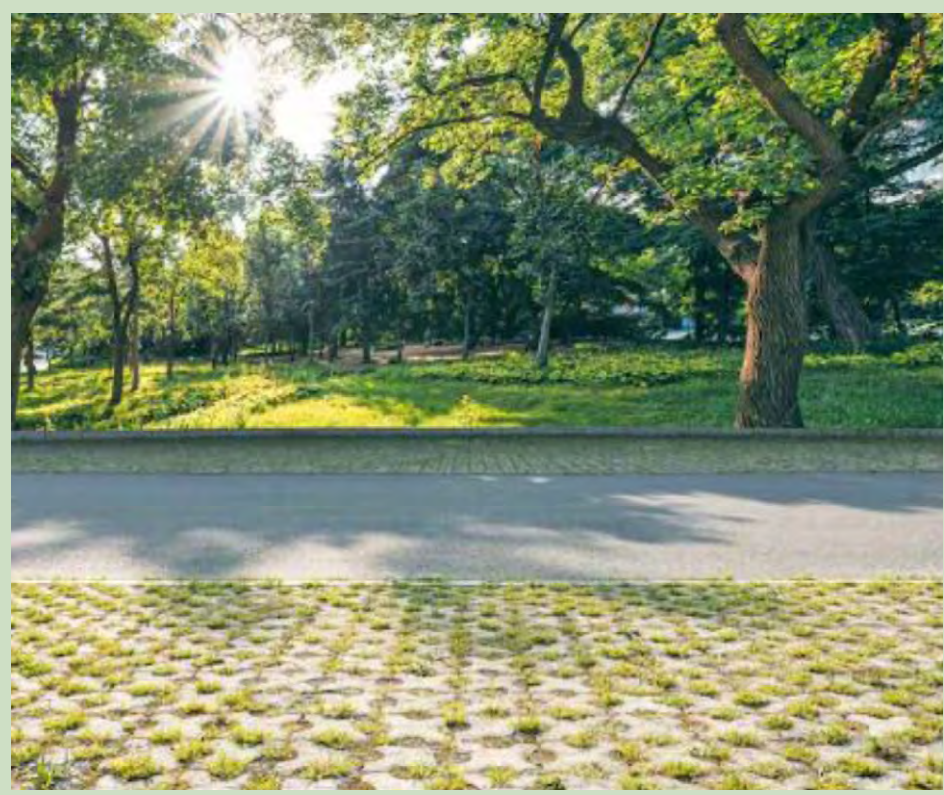
CEMETERY INFRASTRUCTURE WORKS

WIDNES CREMATORIUM AND CEMETERY

OPPORTUNITIES FOR ENHANCEMENT



Green Infrastructure Enhancement



Permeable Paving to store surface water and slow runoff.



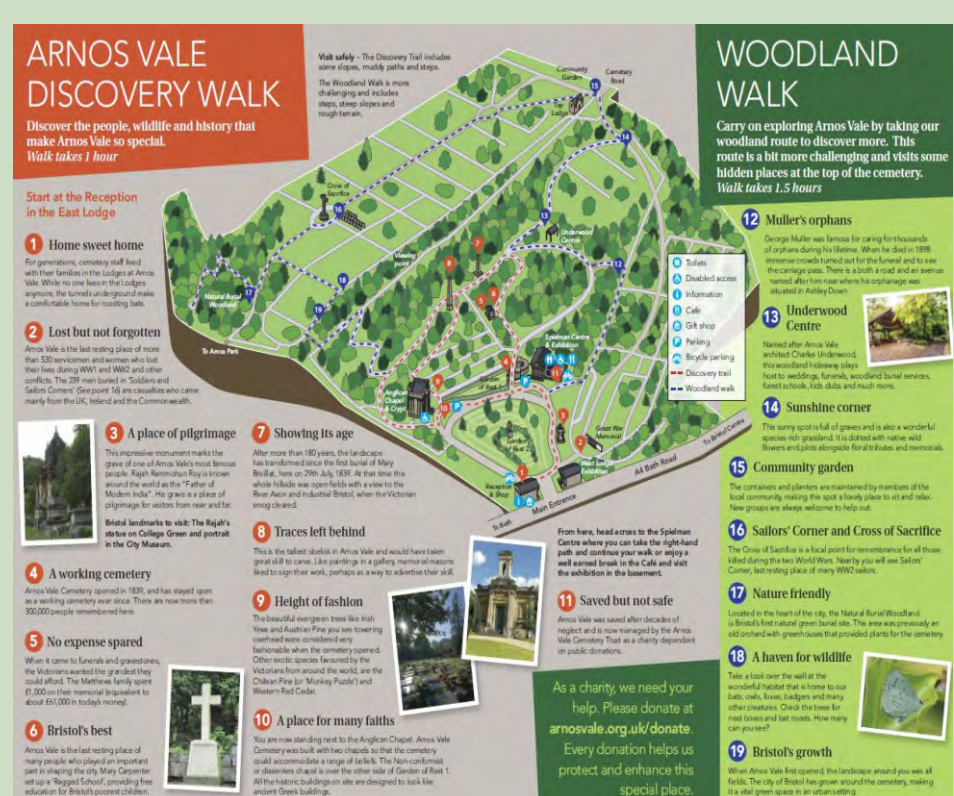
Sustainable Drainage Opportunity



Biodiversity enhancement making space for Nature to thrive for the community in Widnes and Halton



Opportunity for community Arts and Sculptures



Provision of Interpretation panels for nature, heritage and art trails.

RUNCORN CEMETERY

INFRASTRUCTURE ISSUES



Excessive areas of redundant hard standing proves both expensive to maintain but also an issue in ever increasing heavy rain and cloudbursts with high amounts of surface water run off.



Failing old sections of pedestrian paths need to be repaired to avoid claims so rationalisation of path surfacing and hardstanding will reduce this ongoing burden.

Old failing watering points are becoming a problem with expensive leaks and need to be replaced.

CEMETERY INFRASTRUCTURE WORKS

RUNCORN CEMETERY

INFRASTRUCTURE ISSUES (CONTINUED)



Remove redundant sections of highway to increase biodiversity and slow surface water.



Replace paving slabs to reduce ongoing maintenance liability and trip hazards.



Additional green infrasture required to screen existing compound and increase biodiversity.



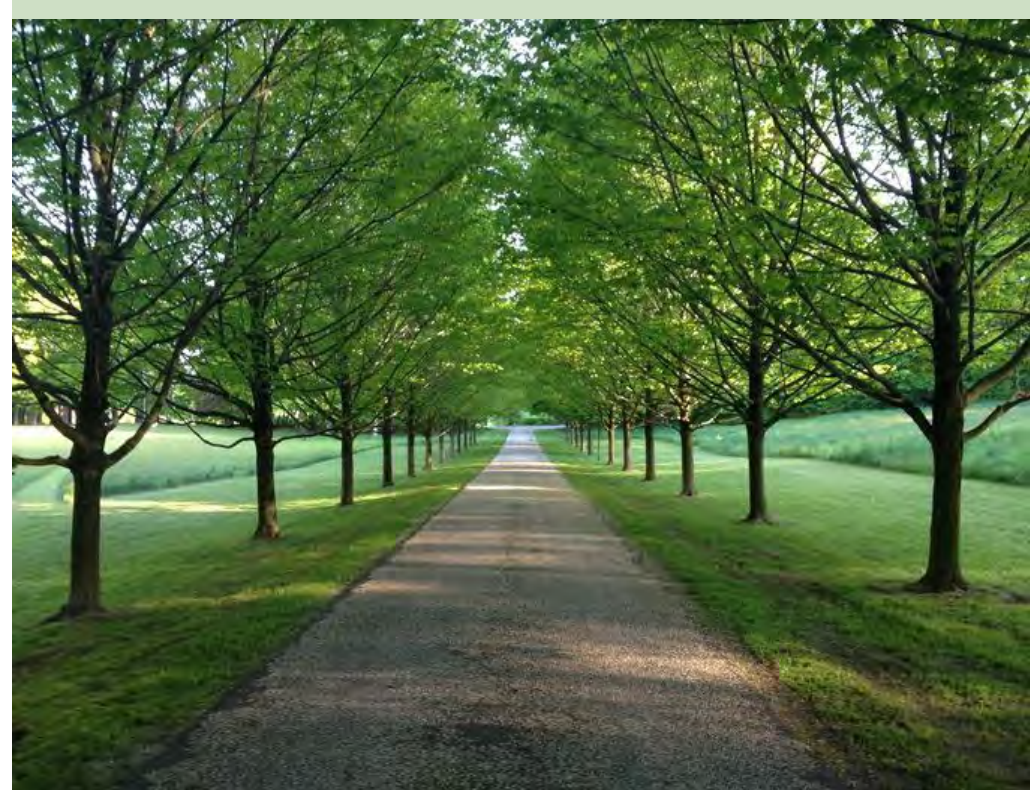
Lack of biodivesity around the cemetery boundary in places provides enhancement opportunities.



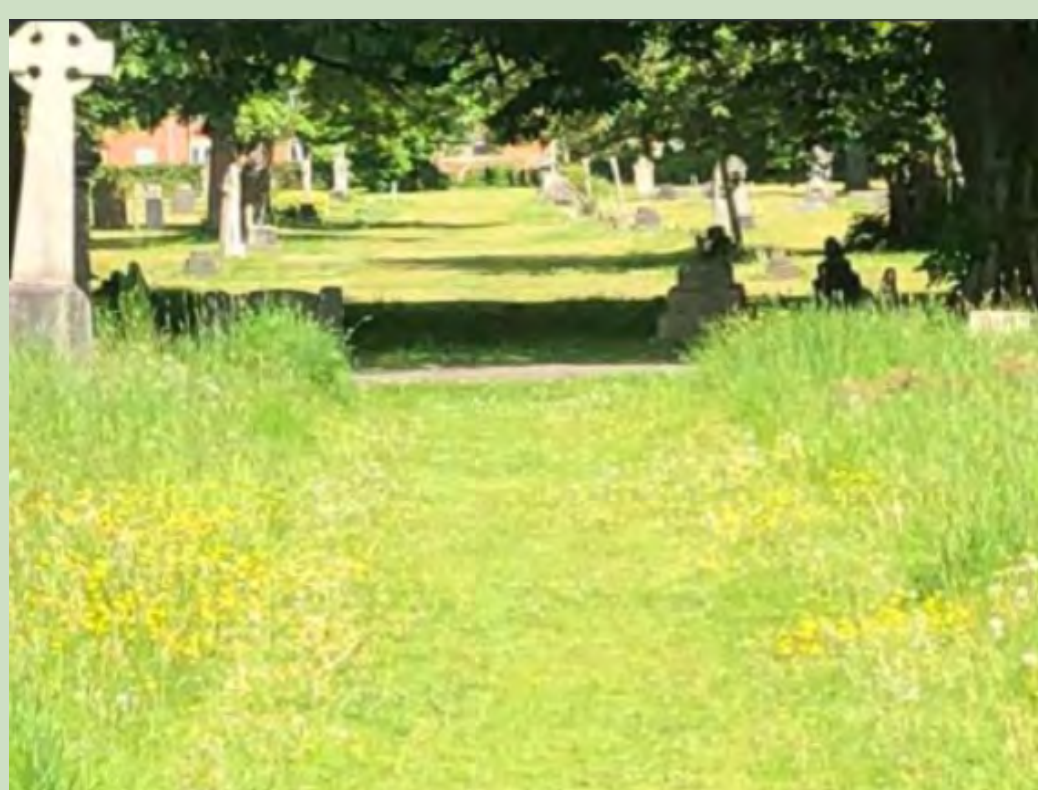
Flooding during heavy rain and cloudbursts is an ongoing issues in the cemetery around some grave plots and requires solutions to slow or direct surface water run off.



OPPORTUNITIES FOR ENHANCEMENT



Green Infrastructure Enhancement



In agreed areas cut grass only for access paths and path edges to increase biodiversity and slow surafce water.



Permeable Paving Opportunity.



Reduce number of memorial seats by combining plaques on seats at key locations.



Biodiversity enhanacement making space for Nature to thrive for the community in Runcorn and Halton



Opportunity for heritage and nature walks with interpretation.



Provision of Interpretation panels

CEMETERY INFRASTRUCTURE WORKS

HALTON CEMETERY

INFRASTRUCTURE ISSUES



The existing paving slabs forming pedestrian paths are uneven and have become a trip liability, providing an ongoing maintenance issue.



Existing Boundary walls and railings need repaired in places



Existing Cemetery railings need painted



Cemetery retaining walls need to be monitored for any movement.

OPPORTUNITIES FOR ENHANCEMENT



Opportunity to replace paving slabs with permeable surfacing



Community Involvement to paint railings



Biodiversity enhancements making space for nature